

PARALLEL PARK

You must be able to pull up next to a parked vehicle on the left; reverse behind it and park within the space of *TWO* car lengths

✔ What's Required?

- ✔ Use MSM, pull up safely next to object vehicle
- ✔ Check all around before and during the manoeuvre
- ✔ Keep the car under control
- ✔ Park within two car lengths, reasonably close to the kerb
- ✔ Respond correctly to other road users
- ✔ Move off safely and drive away

✘ Common Faults!

- ✘ Pulling up too close to object vehicle
- ✘ Missing other road users approaching
- ✘ Reversing too quickly losing control of the vehicle
- ✘ Parking too far from kerb
- ✘ Steering wheel or in the wrong direction

💡 Test Tip

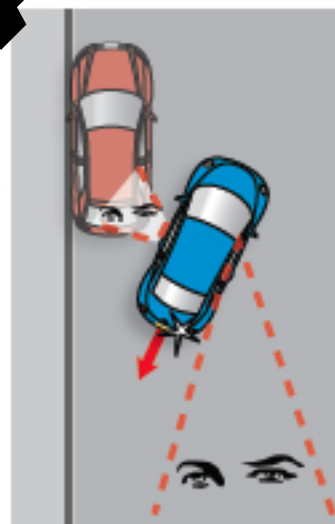
If the examiner chooses this manoeuvre, they'll identify the object vehicle and ask you to pull up next to and parallel with it; reverse back and park behind it within the space of two of your car lengths. They'll usually ask you to ignore any driveways.

Pull up slightly ahead of vehicle and reasonably close



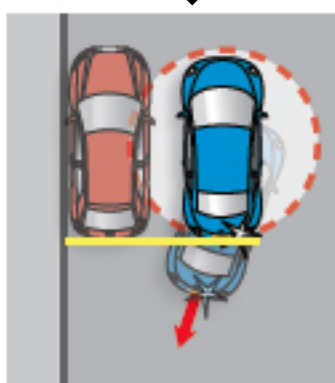
①

Stay aware of blind spots and corner of object vehicle



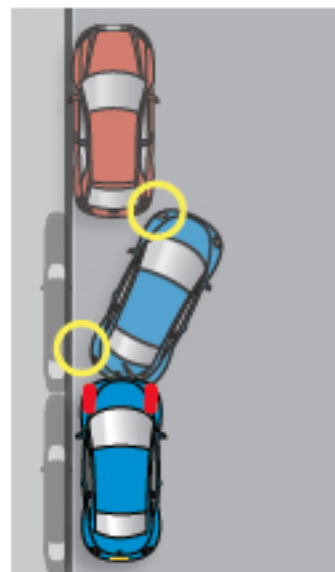
③

When rear of vehicles are level, pause and check around BEFORE turning left



②

Stay aware of corner of object vehicle and kerb



④

Move forward if required
When finished, wheels should be straight